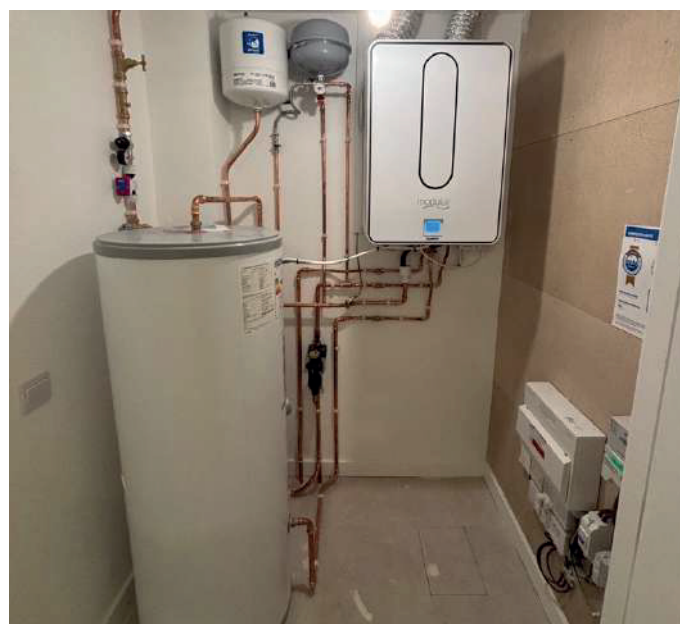


## Project Overview

Site Name	Ballindean Road, Dundee, Scotland
Number of Units	43 Houses & 24 apartments
Product Installed	Modul-Air
Product Status	Complete



### The Perfect Solution

For their development at Ballindean Road, Cullross Ltd. chose the Joule Modul-Air Exhaust Air Heatpump for this project due to its compact decentralised configuration. The development, driven by Caledonia Housing Association (CHA) comprises of 43 houses and 24 flats. It includes homes for social rent and for shared equity sale providing high-quality, safe, warm and affordable homes for local families.

For this reason, the Modul-Air fitted well with Cullross' sustainable design as well as reducing running costs and supporting CHA's wider net zero ambitions. Modul-AIR Exhaust Air Heat Pump (EAHP) provides mechanical ventilation with heat recovery, domestic hot water (DHW) & heating via radiators or underfloor heating (UFH). This solution is best suited for new build flat developments. It uses the waste heat from the extract ventilation and this is recovered by the heat pump to provide the heating and hot water for the dwelling.

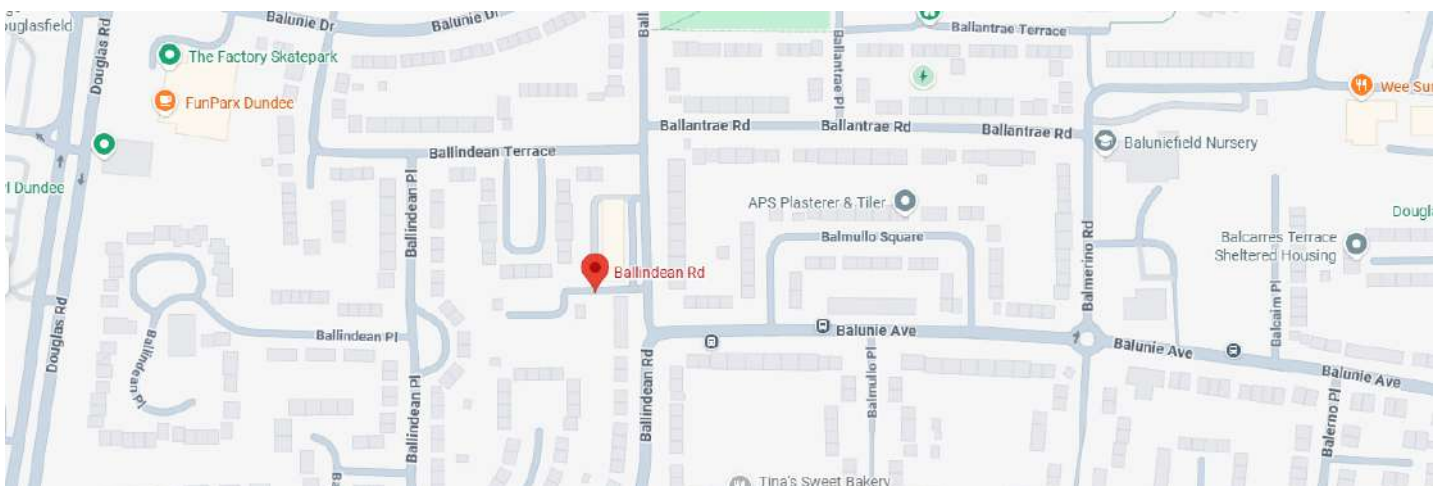
## Project Team



**Main Contractor**

## Address

Ballindean Road., Dundee, Scotland



For more information visit:



[www.joule.ie](http://www.joule.ie)



[www.jouleuk.co.uk](http://www.jouleuk.co.uk)